



# Corporate Card Statement of Account

**Sign-up For  
Online Statements**

[www.americanexpress.com/gopaperless](http://www.americanexpress.com/gopaperless)

Prepared For  
LAURA ARCE  
UNIDOS US

Account Number  
XXXX-XXXXX6-41005

Closing Date  
04/29/25

Page 1 of 3

Previous Balance \$	New Charges \$	Other Debits \$	Payments \$	Other Credits \$	<b>Balance Due \$</b>
506.58	2,101.64	0.00	506.58	0.00	<b>2,101.64</b>

For important information regarding your account refer to page 2.

Please submit all outstanding expenses.

To manage your Account online or to pay your bill, please visit us at [corp.americanexpress.com](http://corp.americanexpress.com). For additional contact information, please see the reverse side of this page.

▼ Please fold on the perforation below, detach and return with your payment ▼

Do not staple or use paper clips

## Payment Coupon

Account Number 3794-444626-41005

LAURA ARCE  
UNIDOS US  
1126 16TH STREET NW  
WASHINGTON DC 20036-4804

**Amount Due  
\$2,101.64**

Payable upon receipt in U.S. Dollars.

Enter 15 digit account number on all payments.

Checks or drafts must be drawn against banks located in the U.S.

Mail Payment to:

See reverse side for instructions on how to update your address, phone number, or email.

AMERICAN EXPRESS  
PO BOX 96001  
LOS ANGELES CA 90096-8000  
|||||

0000379444462641005 000210164000210164 29HH

**Payments:** Your American Express® Corporate Card statement is payable in full upon receipt. Payments received after 5:00pm may not be credited until the next day. Payments must be sent to the payment address shown on your statement and must include the remittance coupon from your statement. Payments must be made in US currency, with a single draft or check drawn on a US bank and payable in US dollars or with a single negotiable instrument payable in US dollars and clearable through the US banking system, or through an electronic payment method clearable through the US banking system. Your Account number must be included on or with all payments. If payment does not conform to these requirements, crediting may be delayed and additional Charges may be imposed. If we accept payment made in a foreign currency, we will choose a conversion rate that is acceptable to us to convert your remittance into US currency, unless a particular rate is required by law. Please do not send post-dated checks. They will be deposited upon receipt. Our acceptance of any payment marked with a restrictive legend will not operate as an accord or satisfaction without our express prior written approval.

**Authorization for Electronic Debit:** We will process checks electronically, at first presentment and any re-presentments, by transmitting the amount of the check, routing number, account number and check serial number to your financial institution, unless the check is not processable electronically or a less costly process is available. By submitting a check for payment, you authorize us to initiate an electronic debit from your bank or asset account. When we process your check electronically, your payment may be debited to the bank or asset account as soon as the same day we receive your check, and you will not receive that cancelled check with your bank or asset account statement. If we cannot collect the funds electronically we may issue a draft against the bank or asset account for the amount of the check. If you currently send in an individual payment for expenses on the Corporate Card, please note that you are eligible to pay your bill online.

**Authorization for Electronic Payments:** By using Pay By Computer, Pay By Phone or any other electronic payment service of ours, you will be authorizing us to initiate an electron debit to the financial account you specify in the amount you request. Payments received after 5:00pm may not be credited until the next day.

**Transactions Made in Foreign Currencies:** If you incur a Charge in a foreign currency, it will be converted into US dollars on the date it is processed by us or our agents. Unless a particular rate is required by applicable law, we will choose a conversion rate that is acceptable to us for that date. Currently the conversion rate that we use for a Charge in a foreign currency is no greater than (a) the highest official conversion rate published by a government agency, or (b) the highest interbank conversion rate identified by us from customary banking sources, on the conversion date or the prior business day, **in each instance increased by 2.5%**. This conversion rate may differ from rates in effect on the date of your Charge. Charges converted by establishments (such as airlines) will be billed at the rates such establishments use.

**In Case of Errors or Questions About Your Bill:** If you think your bill is incorrect, or if you need more information about a transaction on your bill, please call 1-800-528-2122 or the number on the back of your Card. You can also write us on a separate sheet of paper at the Customer Service address noted to the right. Requests for refunds of credit balances (designated "CR") should be made by calling us at 1-800-528-2122 or the number on the back of your Card. Billing disputes can also be initiated online. This applies to Corporate Cards only, not Cards issued under the Corporate Defined Express Program.

**In Case of Errors or Questions About Electronic Transfers:** Please contact us by calling 1-800-IPAY-AXP for Pay By Phone, Pay By Computer issues and automatic payment issues.

**When Contacting Us Regarding Errors or Questions:** We must hear from you no later than 60 days after we send you the first bill on which the error or problem appeared. When contacting us, please give us the following information: 1. Your name and account number; 2. The dollar amount of the suspected error; 3. Describe why you believe there is an error. If you need more information, describe the item you are unsure about. You do not have to pay any amount in question while we are investigating, but you are still obligated to pay the parts of your bill that are not in question. While we investigate your question, we cannot report you as delinquent or take any action to collect the amount you question.



**Manage your Card account online at:**  
americanexpress.com/  
checkyourbill



**For all further inquiries or to pay by phone,** please call the number on the back of your Card.

**If your Card has been lost or stolen,** please call 1-800-528-2122

**International Collect:**  
1-336-393-1111

**Hearing Impaired Services:**  
Dial Relay 711 and  
1-800-528-2122

**Large Print and Braille Statements:**  
1-800-528-2122



**Customer Service**  
P.O. Box 981531  
El Paso, TX  
79998-1531

**Payments**  
PO BOX 96001  
LOS ANGELES CA 90096-  
8000

## Change of Address, phone number, email

- Online at [www.americanexpress.com/updatecontactinfo](http://www.americanexpress.com/updatecontactinfo)
- Via Mobile device
- Voice automated: call the number on the back of your card
- For Name, Company Name, and Foreign Address or Phone changes, please call Customer Care

**Please do not add any written communication or address change on this stub.**



Prepared For  
**LAURA ARCE**  
**UNIDOS US**

Account Number  
**XXXX-XXXXX6-41005**

Closing Date  
**04/29/25**

**Activity** Date reflects either transaction or posting date

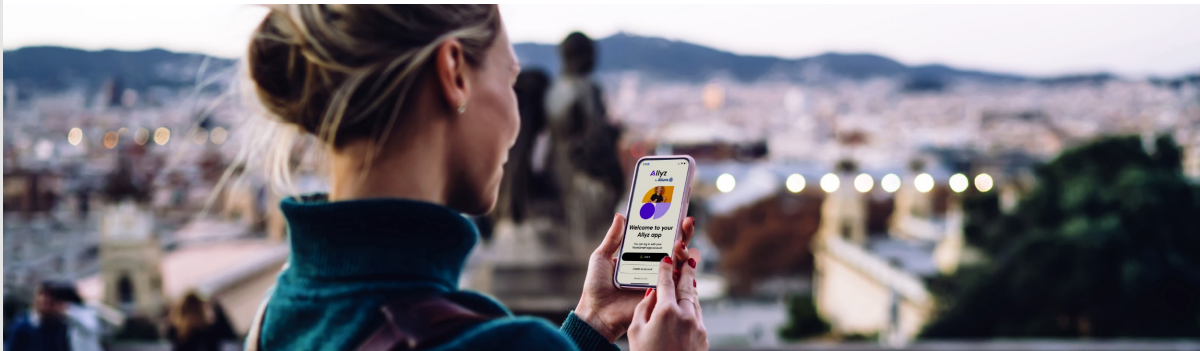
Card Number	XXXX-XXXXX6-41005	Reference Code	Amount \$
04/09/25	CORPORATE REMITTANCE RECEIVED 04/09		-506.58
03/31/25	ALLIANZ TRAVEL INS RICHMOND VA REF# KKW98KP7 8772524264 03/31/25		29.12
04/01/25	DELTA AIR LINES ATLANTA US TKT# 00623192539045 DELTA AIR 04/01/25 PASSENGER TICKET ARCE CLOUTIER/LAURA DELTA AIR LINES DELTA AIR LINES ATLANTA US FROM WASHINGTON NAT'L D TO CARRIER CLASS ATLANTA GA DL L TO WASHINGTON NAT'L D DL U TO UNAVAILABLE YY 00 TO UNAVAILABLE YY 00		447.97
04/01/25	ROYAL SONESTA SAN JU CAROLINA FOL# 0000001905 SONESTA HOTEL 03/31/25 ARRIVAL DATE DEPARTURE DATE 03/31/25 03/31/25 00 ROOM RATE \$0.01 ROC NUMBER 0000001905	46590000000	1,499.55
04/04/25	CVENT* 2025 SOLUTION TYSONS CORNER VA REF# CH_3RADNEBHI +18663184357 04/04/25		125.00
<b>Total for LAURA ARCE</b>		New Charges/Other Debits Payments/Other Credits	2,101.64 -506.58



## Natali Cupido

**From:** Allianz Global Assistance(Allianz Assistance USA)  
<donotreplypolicy@allianzassistance.com>  
**Sent:** Monday, March 31, 2025 11:09 AM  
**To:** Natali Cupido  
**Subject:** Your travel insurance plan: EUSP2481813645

**CAUTION:** This email originated from outside of the organization. Do not click links or open attachments unless you recognize the sender and know the content is safe.



Hi Laura,  
Thanks for [protecting your trip](#).

STEP 1

### View your plan details

<b>Plan</b>	Domestic Journey Protector I
<b>Plan Number</b>	EUSP2481813645
<b>Total Amount Paid</b>	\$29.12
<b>Purchase Date</b>	March 31, 2025
<b>Effective Date</b>	April 1, 2025
<b>Travel Dates</b>	April 29, 2025 - April 30, 2025
<b>Preferred Communication</b>	None Selected - <a href="#">Change</a>

VIEW YOUR FULL PLAN ON ALLYZ

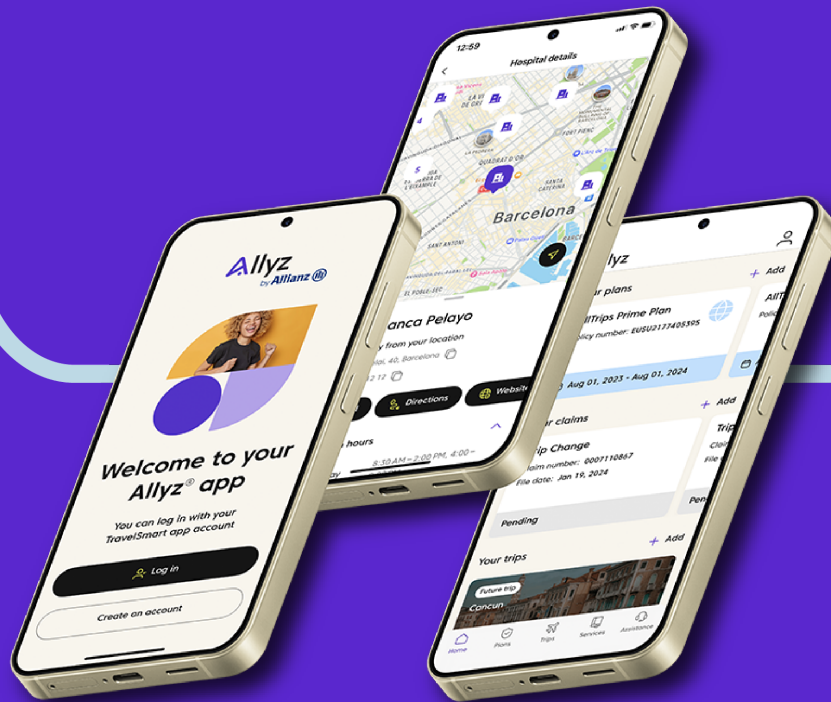
[VIEW YOUR FULL PLAN ON OUR WEBSITE](#)

If you're not completely satisfied, you have 15 days (or more, depending on your state of residence) to request a refund, provided you haven't started your trip or initiated a claim. Premiums are non-refundable after this period.

STEP 2

## Download Allyz® to take your protection further

Get even more out of your plan with our Allyz app. Manage your plan on the go, file a claim with ease, and get access to exclusive digital services like real-time safety alerts, trip organizer, and more.



STEP 3

# Let us know if you have additional non-refundable reservations

Lodging, rental car and activities can be included in your insurance coverage.  
[CONTACT US ONLINE](#) or [CALL 1-800-419-8016](#) to update your plan.

Thank you,  
Allianz Global Assistance

## Quick Links



### My Plan

Manage your plan and get quick access to your Insurance ID Card.



### Claims Center

If the unexpected hits, don't worry - filing a claim is fast and simple.



### FAQs

Get answers to commonly asked questions about plans, claims, and more.



### 24/7 Assistance

Call us at [1-800-419-8016](#) (Toll-free, Domestic) or [1-804-281-5700](#) (Collect, International).



**Worldwide Olympic and Paralympic  
Insurance Partner**

Allianz Global Assistance

[1-800-284-8300](#)

[customerservice@allianzassistance.com](mailto:customerservice@allianzassistance.com)

Get social



Please do not reply to this automated message.  
Terms, conditions, and exclusions apply, including for pre-existing conditions.

Insurance benefits underwritten by BCS Insurance Company (OH, Administrative Office: 2 Mid America Plaza, Suite 200, Oakbrook Terrace, IL 60181), rated "A" (Excellent) by A.M. Best Co., under BCS Form No. 52.201 series or 52.401 series, or Jefferson Insurance Company (NY, Administrative Office: 9950 Mayland Drive, Richmond, VA 23233), rated "A+" (Superior) by A.M. Best Co., under Jefferson Form No. 101-C series or 101-P series, depending on your state of residence and plan chosen. A+ (Superior) and A (Excellent) are the 2nd and 3rd highest, respectively, of A.M. Best's 13 Financial Strength Ratings. Plans only available to U.S. residents and may not be available in all jurisdictions. Allianz Global Assistance and Allianz Travel Insurance are marks of AGA Service Company dba Allianz Global Assistance (AGA) or its affiliates. AGA compensates their suppliers or agencies for allowing AGA to market or offer products to customers of the supplier or agency. Allianz Travel Insurance products are distributed by Allianz Global Assistance, the licensed producer and administrator of these plans and an affiliate of Jefferson Insurance Company. The insured shall not receive any special

benefit or advantage due to the affiliation between AGA Service Company and Jefferson Insurance Company. Plans include insurance benefits and assistance services. Any Non-Insurance Assistance services purchased are provided through AGA Service Company. Except as expressly provided under your plan, you are responsible for charges you incur from third parties. Contact AGA Service Company at [800-284-8300](tel:800-284-8300) or [9950 Mayland Drive, Richmond, VA 23233](tel:9950) or [customerservice@allianzassistance.com](mailto:customerservice@allianzassistance.com).

Â©2025 AGA Service Company. We respect your privacy. We never sell your personal information to third parties or use it for any purpose other than as we describe in our [privacy policy](#). You can also view our [Purchase Agreements and Disclosures](#).  
REV 11/2024

## Natali Cupido

---

**From:** Delta Air Lines <DeltaAirLines@t.delta.com>  
**Sent:** Monday, March 31, 2025 11:11 AM  
**To:** Natali Cupido  
**Subject:** Your Flight Receipt - LAURA ARCE CLOUTIER 29APR25

**CAUTION:** This email originated from outside of the organization. Do not click links or open attachments unless you recognize the sender and know the content is safe.

[View as a web page](#)



#9153235321  
SkyMiles® Member

**Confirmation Number**

---

**GU9WS7**

# THANK YOU FOR CHOOSING DELTA SEE YOU ON BOARD



You're all set. If your plans change, you can make adjustments or cancel your itinerary on [MyTrips](#) on the Fly Delta app or [delta.com](#) before your flight departs.

Have a great trip, and thank you for choosing Delta.

## Passenger Info

Name: LAURA ARCE CLOUTIER  
SkyMiles #9153235321

FLIGHT	SEAT
DELTA 1020	28D
DELTA 850	24D

Visit [delta.com](#) or download the [Fly Delta app](#) to view, select or change your seat. If you purchased a Delta Comfort+™ seat or a Trip Extra, please visit [My Trips](#) to access a receipt of your purchase.

Tue, 29APR	DEPART	ARRIVE
DELTA 1020 Main (L)	WASHINGTON- REAGAN 3:50pm	ATLANTA 5:49pm

Wed, 30APR	DEPART	ARRIVE
DELTA 850 Main (U)	ATLANTA 3:40pm	WASHINGTON- REAGAN 5:25pm

[MANAGE MY TRIP](#)

## Flight Receipt

Ticket #: **0062319253904**

Place of Issue:

Issue Date: 31MAR25

Expiration Date: 31MAR26

METHOD OF PAYMENT	
AX*****1005	\$447.97 USD

CHARGES	
<b>Air Transportation Charges</b>	
Base Fare	\$388.25 USD
<b>Taxes, Fees and Charges</b>	

United States - September 11th Security Fee(Passenger Civil Aviation Security Service Fee) (AY)	\$11.20 USD
United States - Transportation Tax (US)	\$29.12 USD
United States - Passenger Facility Charge (XF)	\$9.00 USD
United States - Flight Segment Tax (ZP)	\$10.40 USD
<b>TICKET AMOUNT</b>	<b>\$447.97 USD</b>

## Checked Bag Allowance

The fees below are based on your original ticket purchase. Fees may be converted to local currency based on your departure airport. **If you qualify for free or discounted checked baggage**, this will be taken into account when you check in. Visit [delta.com](https://delta.com) for details on baggage embargoes that may apply to your itinerary.

Tue 29 Apr 2025		DCA-ATL
CARRY ON	FIRST	SECOND
FREE	\$35.00 <sup>USD</sup> (50LBS/23KG) OR 3,500 miles	\$45.00 <sup>USD</sup> (50LBS/23KG) OR 4,500 miles

This trip is operated by Delta and the following carrier(s): . Visit [delta.com](https://delta.com) for details on [baggage embargoes](#) that may apply to your itinerary. Also see other carrier's complete [baggage information](#).

Wed 30 Apr 2025		ATL-DCA
CARRY ON	FIRST	SECOND
FREE	\$35.00 <sup>USD</sup> (50LBS/23KG) OR 3,500 miles	\$45.00 <sup>USD</sup> (50LBS/23KG) OR 4,500 miles

This trip is operated by Delta and the following carrier(s): . Visit [delta.com](https://delta.com) for details on [baggage embargoes](#) that may apply to your itinerary. Also see other carrier's complete [baggage information](#).

## Your Pre-Trip Checklist For Easier Travel

---



### Book Delta Stays And Car Rentals

Earn miles by booking your travel accommodations with our hotel and car rental partners.

[Book Today >](#)



### Flight Deals And More Delivered

Opt in through your SkyMiles profile to receive the latest flight deals and promotions.

[Update Your Account >](#)



### Visit Our Help Center

Find information on self-service tools, baggage, SkyMiles and more.

[Explore Now >](#)

### Request Special Services

We are here to help. Complete our [Service Request Form](#) if you need extra assistance during your trip.

## Transportation of Hazardous Materials

Federal law forbids the carriage of hazardous materials aboard aircraft in your luggage or on your person. A violation can result in civil penalties. Examples include: Paints, aerosols, lighter fluid, fireworks, torch lighters, tear gases and compressed gas cartridges.

There are special exceptions for small quantities (up to 70 ounces total). For further information visit [delta.com Restricted Items Section](https://www.delta.com/RestrictedItemsSection).



[Help Center](#) ● [Flight Deals](#) ● [Earn Miles](#) ● [Stays & Cars](#)



[Privacy Policy](#)

---

We believe travel can change the world. For good. Learn more about our Flight to Net Zero<sup>SM</sup> at [delta.com/sustainability](https://www.delta.com/sustainability).

### Terms & Conditions

This ticket is non-refundable unless the original ticket was issued at a fully refundable fare. Some fares may not allow changes. If allowed, any change to your itinerary may require payment of a change fee and increased fare. Failure to appear for any flight without notice to Delta will result in cancellation of your remaining reservation.

Note: When using certain vouchers to purchase tickets, remaining credits may not be refunded. Additional charges and/or credits may apply.

Fare Details: WAS DL ATL Q0.17 194.42LAVNA0MQ DL WAS Q0.17 193.49UAWNH3MF USD388.25END ZP DCAATL XF DCA4.5ATL4.5

†All SkyMiles<sup>®</sup> program rules apply. To review the rules, see Membership Guide & Program Rules. Taxes and fees for Award Travel are the responsibility of the passenger and must be paid at the time the ticket is booked. Award Travel seats are limited and may not be available on all flights or in all markets. Offers void where prohibited by law. Other restrictions may apply.

### Checked Bag Allowance

\*On Delta<sup>®</sup> operated flights, you may carry on one bag and a small personal item at no charge.

Delta One<sup>®</sup>/First/Business Class weight allowance reverts to 50 lbs for all checked bags beyond regular free allowance.

At the time of check in with Delta, SkyMiles Medallion members, SkyTeam Elite & Elite Plus and active US Military personnel are eligible for fee waivers and other benefits. For more details, visit [delta.com/baggage](https://delta.com/baggage). Basic Cardmembers with a Gold, Platinum, or Reserve Delta SkyMiles Credit Card from American Express are eligible for the first bag fee waiver. More details on the program can be found at [delta.com/firstbagfree](https://delta.com/firstbagfree).

A standard checked bag with Delta may be up to 50 lbs and 62 linear inches (per piece). Additional fees apply for oversize, overweight, and/or additional pieces of checked baggage. Please review Delta's baggage guidelines for details. Weight and size restrictions may vary when checking baggage on carriers other than Delta. Contact the operating carrier for detailed checked baggage allowances. You must be checked in at the gate by the applicable check-in deadlines or your reservation may be cancelled. Please review Delta's check-in requirement guidelines for details. Check-in requirements vary by airline, so if your ticket includes travel on other airlines, please check with the operating carrier on your ticket.

Do you have comments about our service? Please [email](#) us to share them.

#### **ADVICE TO INTERNATIONAL PASSENGERS ON LIMITATIONS OF LIABILITY**

Passengers embarking upon a journey involving an ultimate destination or a stop in a country other than the country of departure are advised that the provisions of an international treaty (the Warsaw Convention, the 1999 Montreal Convention, or other treaty), as well as a carrier's own contract of carriage or tariff provisions, may be applicable to their entire journey, including any portion entirely within the countries of departure and destination. The applicable treaty governs and may limit the liability of carriers to passengers for death or personal injury, destruction or loss of, or damage to, baggage, and for delay of passengers and baggage.

Additional protection can usually be obtained by purchasing insurance from a private company. Such insurance is not affected by any limitation of the carrier's liability under an international treaty. For further information please consult your airline or insurance company representative.

#### **Conditions of Carriage**

Air transportation on Delta and the Delta Connection<sup>®</sup> carriers is subject to Delta's [conditions of carriage](#). They include terms governing for example:

- [Limits on our liability](#) for personal injury or death of passengers, and for loss, damage or delay of goods and baggage.
- [Claim restrictions](#) including time periods within which you must file a claim or bring action against us.
- Our right to [change terms](#) of the contract.
- [Check-in requirements](#) and other rules established when we may [refuse carriage](#).
- Our rights and limits of our liability for [delay or failure to perform service](#) including schedule change, substitution of alternative air carriers or aircraft, and rerouting.
- Our policy on [overbooking flights](#), and your rights if we deny you boarding due to an oversold flight.

These terms are incorporated by reference into our contract with you. You may view these conditions of carriage on [delta.com](https://delta.com), or by requesting a copy from Delta.

You have received this email because you elected to receive your Electronic Ticket receipt sent to you via email. If you would like to take advantage of other Delta email programs featuring special fares, promotions and information, please visit [delta.com/myprofile/preferences](https://delta.com/myprofile/preferences).

This document establishes the creation of your electronic EMD(S) in our computer systems. It does not constitute a document of carriage. Where this document is issued for transportation or services other than passenger air transportation, specific terms and conditions may apply. These terms and conditions may be provided separately or may be obtained from the issuing agent.

Effective December 15, 2019, the Canada Air Passenger Protection Regulations may provide additional protections to passengers traveling to or from Canada:

*If you are denied boarding, your flight is cancelled or delayed for at least two hours, or your baggage is lost or damaged, you may be entitled to certain standards of treatment and compensation under the Air Passenger Protection Regulations. For more information about your passenger rights please contact your air carrier ([www.delta.com/appr](https://www.delta.com/appr)) or visit the Canadian Transportation Agency's website.*

*Si l'embarquement vous est refusé, ou si votre vol est annulé ou retardé d'au moins deux heures ou si vos bagages sont perdus ou endommagés, vous pourriez avoir droit au titre du Règlement sur la protection des passagers aériens, à certains avantages au titre des normes de traitement applicables et à une indemnité. Pour de plus amples renseignements sur vos droits, veuillez communiquer avec votre transporteur aérien ( [www.delta.com/appr](http://www.delta.com/appr)) ou visiter le site Web de l'Office des transports du Canada.*

#### **COPYRIGHT INFORMATION**

This email message and its contents are copyrighted and are proprietary products of Delta Air Lines, Inc. Any unauthorized use, reproduction, or transfer of this message or its contents, in any medium, is strictly prohibited.

This is a post only email (EMD+). Please do not respond to this message.

#### **PRIVACY POLICY**

Your privacy is important to us. Please review our [Privacy Policy](#).

You are receiving this operational message due to your upcoming travel or recent activity with Delta. Even if you have opted-out of receiving Delta marketing communications, you may still receive operational emails with relevant information based on your upcoming travel or recent activity.

This email was sent to: [ncupido@unidosus.org](mailto:ncupido@unidosus.org)

© 2025 Delta Air Lines, Inc. All rights reserved.  
Delta Blvd. P.O. Box 20706 • Atlanta, GA 30320-6001

247382E-Receiptprod

Laura Arce  
UnidosUS

2025 Solutions for Housing Communications

The National Press Club  
info@nhc.org  
Whitney Sarkodie

your country

larce@unidosus.org  
2024200029

**Invoice**  
SFHC23-042025-0270-0272

**Order**  
LPNNGKMDGVC

**Invoice Date**  
April 4, 2025 / 1:12 PM ET

Item	Price	Quantity	Amount
Virtual Attendee	\$125.00	1	\$125.00
<b>Subtotal:</b>			\$125.00
<b>Tax:</b>			\$0.00
<b>Order Total:</b>			<b>\$125.00</b>

**Fatima Sierra Vargas**  
**United States**

Room No. :  
 Arrival : 04-06-25  
 Departure : 04-11-25  
 Folio No. :  
 Conf. No. : IW4VE4TQ  
 Cashier No. : 1354  
 TA Record :

Company Name: The National Association for Latino Comm

Group Name: Nalcab 2025

**PRO-FORMA FOLIO**

Date	Description	Charges	Credits
04-06-25	Room Charge	269.00	
04-06-25	Occupancy Tax	24.21	
04-06-25	Bellman	5.50	
04-06-25	Maid	2.00	
04-07-25	Room Charge	269.00	
04-07-25	Occupancy Tax	24.21	
04-07-25	Maid	2.00	
04-08-25	Room Charge	269.00	
04-08-25	Occupancy Tax	24.21	
04-08-25	Maid	2.00	
04-09-25	Room Charge	269.00	
04-09-25	Occupancy Tax	24.21	
04-09-25	Maid	2.00	
04-10-25	Room Charge	269.00	
04-10-25	Occupancy Tax	24.21	
04-10-25	Maid	2.00	
		<b>Total Charges</b>	1,481.55
		<b>Total Credits</b>	0.00
		<b>Balance</b>	<b>1,481.55</b>

**Guest Signature:** \_\_\_\_\_